



Carolinas HealthCare System

ImPACT
Baseline and Post Injury Test
Administration

Age Requirements

Individuals between the ages of 10 and 59 can take the test.



What You Will Need

- Quiet Space
- Parental Supervision
- Dimmed Lights
- Computer(Preferably Desktop) with Internet Access.
- External Mouse and Full Size Key Board



How To Perform A Baseline Test

- Type in the following address:
www.impacttestonline.com/carolinasmedicalcenter
- Follow the directions that are outlined on the following slides.





ImPACT Applications

Carolinas Medical Center

Concord High School

Mt Pleasant High School

West Meck High School

West Charlotte High School

Independence High School

Lincolnton High School

Garinger High School

Providence High School

zzzzRetired 1

zzzzRetired 3

zzzzRetired 4

Vance High School

Winkler Middle School

Nation Ford High School

Wingate University

Northwest Cabarrus High School

Central Cabarrus High School

Mt Pleasant Middle School

South Charlotte Youth Recreational Association

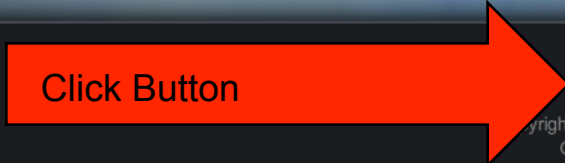
Charlotte United Football Club

Union Academy

North Carolina Wesleyan College

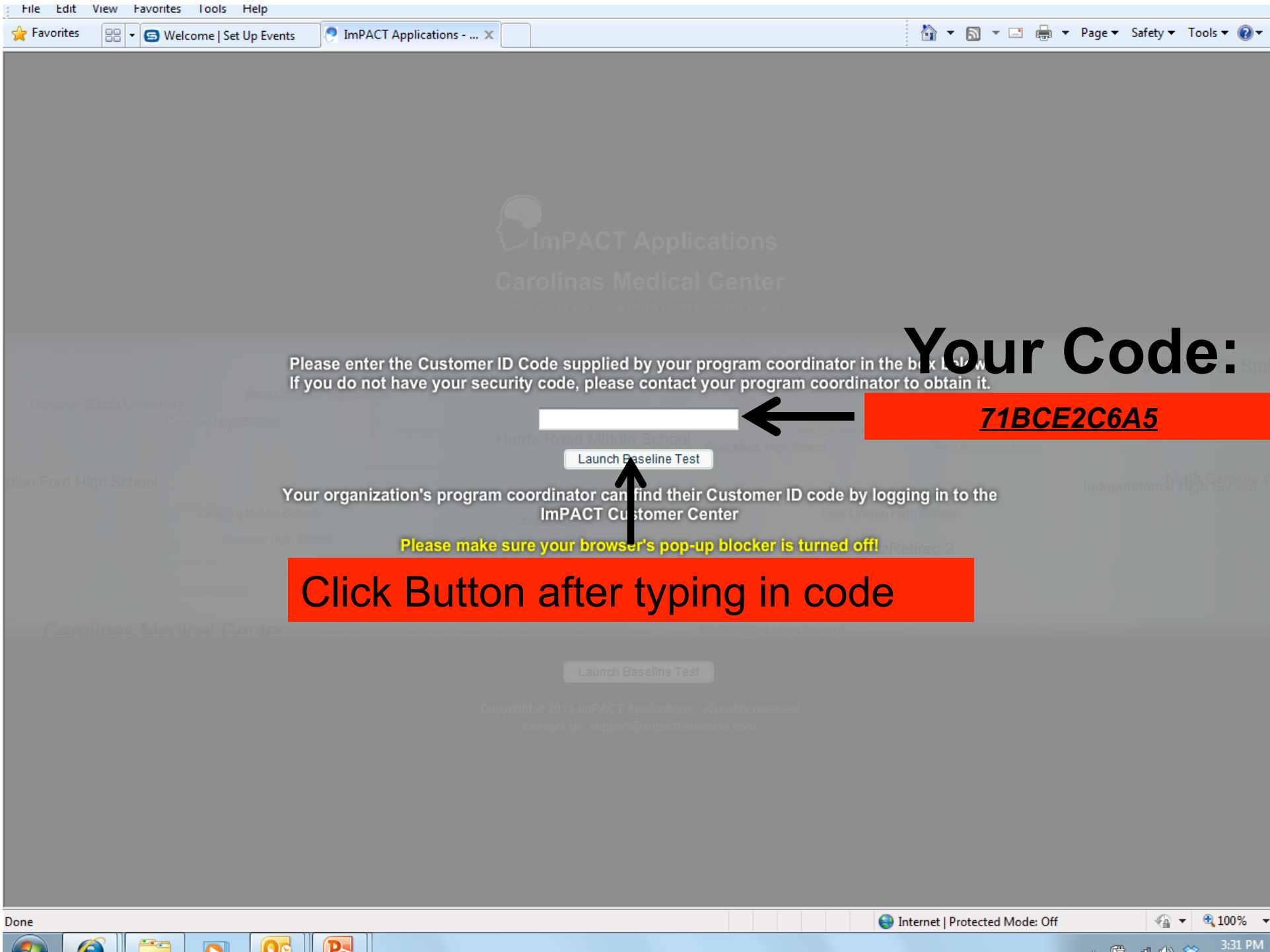
Harris Road Middle School

JN Fries Middle School



Launch Baseline Test

Copyright © 2011 ImPACT Applications - All rights reserved
Contact Us: support@impacttestonline.com



Your Code:

71BCE2C6A5

Please enter the Customer ID Code supplied by your program coordinator in the blank box below. If you do not have your security code, please contact your program coordinator to obtain it.

Launch Baseline Test

Your organization's program coordinator can find their Customer ID code by logging in to the ImPACT Customer Center

Please make sure your browser's pop-up blocker is turned off!

Click Button after typing in code

Launch Baseline Test

Copyright © 2011 ImPACT Applications - All rights reserved.
Contact Us: support@impacttestonline.com

Choose Your Language




English Spanish German

Copyright © ImPACT Applications, Inc. 2012. All rights reserved.

The image shows a web interface for selecting a language. At the top left of the interface is the ImPACT logo, which consists of a blue silhouette of a human head with a brain inside, followed by the text "ImPACT™". Below the logo, there is a large, light-colored rectangular area containing three buttons: "English", "Spanish", and "German". At the bottom of the interface, there is a red horizontal bar with the text "Copyright © ImPACT Applications, Inc. 2012. All rights reserved." in white.

Important Instructions

**ImPACT™**[Demographic Questions]Taking the TestTest Results

Before you begin...

Please make sure of the following before starting your exam:

- 1) An External mouse must be used throughout the exam. TouchPad and TrackPoint mice (typically found on laptop computers) should NOT be used.
- 2) If you are taking your exam on a laptop computer, make sure it is plugged into an electrical outlet and is not running on battery power.
- 3) Please close any applications other than IMPACT that are currently running on this computer.
- 4) Please choose an environment that is free of noise and other distractions.

Options

During the exam, you will be asked to enter information such as your height and weight. Select the units of measurement you want to use when entering this type of information.

English (inches, pounds, etc.)

Metric (centimeters, kilograms, etc.)

Copyright © ImPACT Applications, Inc. 2012. All rights reserved.



ImPACT™

[Demographic Questions]

Taking the Test

Test Results

The ImPACT testing process is made up of three components:

Gathering/reviewing background information indicating current symptoms and conditions, and completion of the test modules. The information for the first two components is to be gathered and completed by the exam supervisor. The third component should be completed by the athlete.

Click 'Next' to begin the first component.

1. Sport and Health History

General Information

Language

Education

Sports

Concussion History

Other Medical History

2. Current Symptoms and Conditions

3. Neurocognitive Testing

Go Back

Next



ImPACT™

[Demographic Questions]

Taking the Test

Test Results

Sport and Health History

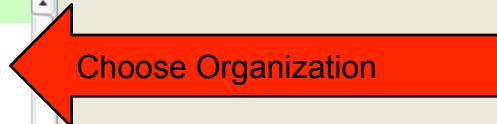
Please enter the information below:

Clinic Name:

Carolinas Medical Center

School / Organization:

- A.L. Brown High School
- Ardrey Kell High School
- Berry High School
- Butler High School
- Cannon School
- Carolinas Medical Center
- CC Griffin Middle School
- Central Cabarrus High School
- Charlotte Soccer Academy
- Charlotte United Football Club
- Concord High School



Go Back

Next

If you have questions?

- Send an email to the following address
 - CHSSportsmedicine@carolinashealthcare.org
- If your child exhibits signs and symptoms of a concussion:
 - Call The Carolinas Concussion Network's 24 hour hotline at 704-355-9200 to speak to a healthcare professional.

